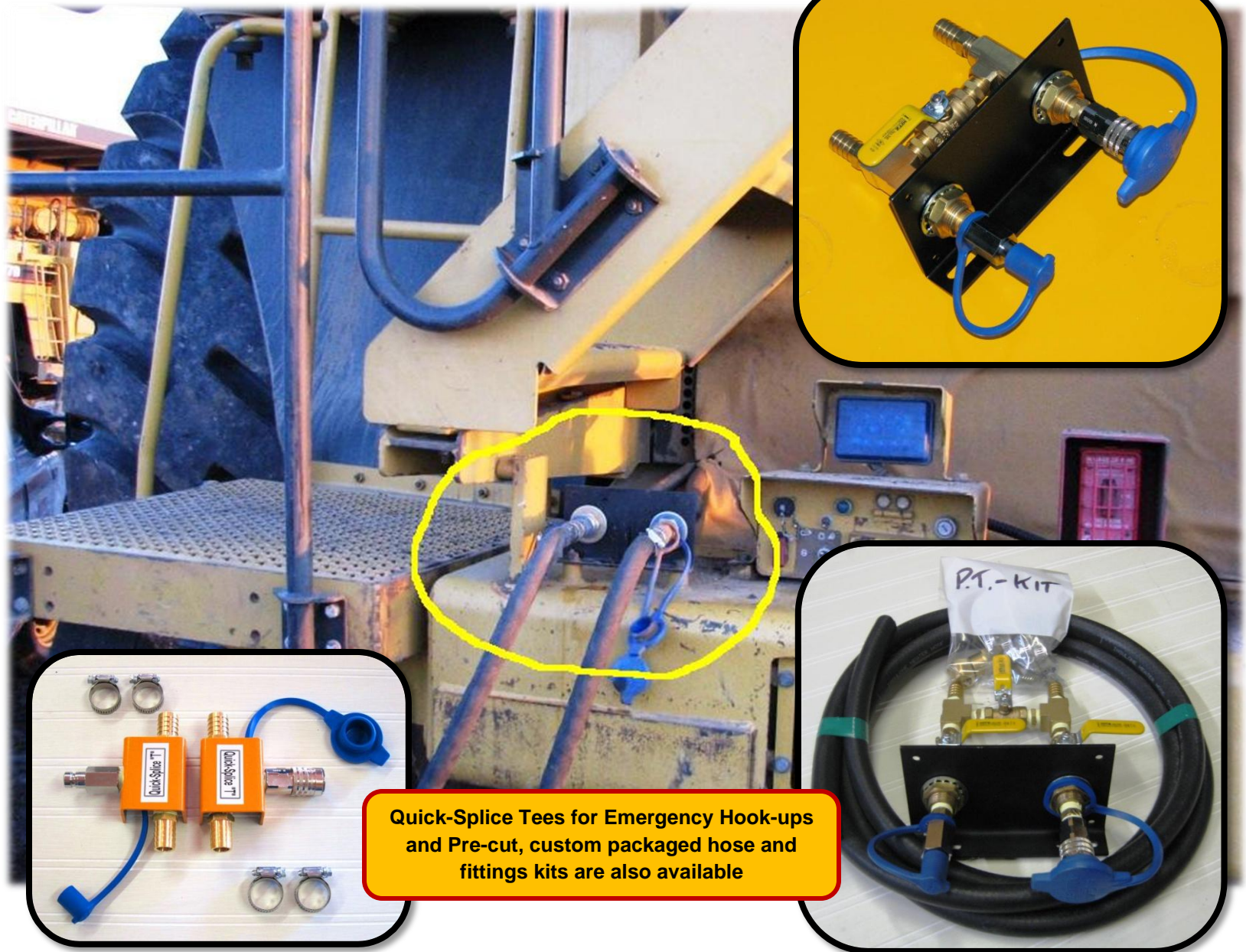


Retrofit Quick-Coupler Kits by, **THERMEX**

- Equip your machines with the PortaThaw Cold-Start system using our Redi-made Low Pressure, High GPM Flow, Quick-Coupler Assembly Kit.
- Simply Install hose lines into Engine Block Ports and plumb up to Kit Assembly at an accessible mounting location.



Quick-Splice Tees for Emergency Hook-ups and Pre-cut, custom packaged hose and fittings kits are also available

THERMEX
ENGINEERED SYSTEMS INC.

CANADA
101-2469 Pauline Street,
Abbotsford BC V2S 3S1

USA
726 Cherry Street, P.O. Box 8000,
Sumas WA 98295